

SERVER

• E S S E N T I A L S •

Single Merchandisers Supreme™ Topping Warmers | Export

SPECIFICATION SHEET

FAST FACTS

Supreme™ Topping Warmers precise temperature control and even heat ensures more warm cheese or dessert topping is dispensed from each #10 food can or 2.8 L jar (94009 sold separately).

APPLICATION

- Keep your concessions moving and food costs under control with portioned toppings of Hot Fudge, Caramel or Cheese Sauce in a Server Supreme™ topping warmer

DETAILS

- Toppings are served at their peak flavor with a temperature-controlled thermostat to turn the wrap-around heating element on or off as needed; plus, the heated spout ensures safety when serving potentially hazardous foods
- Stainless steel warmers with pump serve 1 oz portions and adjust in 1/8 oz increments for [Portion Optimization™](#)
- Water fill lines, in 81140, prevent overflow accidents; pouch model eliminates water-level monitoring and vapor damage to topping as aluminum pouch support evenly transfers heat without the need for a water bath
- Create LTO interest with (3) merchandising graphics: Hot Fudge, Caramel and Cheese Sauce (included) or [download a graphic template](#) for your custom design



81140 Option: SST Jar 94009
& Storage Lid 94008



Magnetic Decal Set 86749



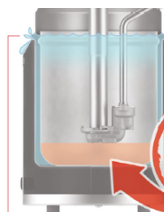
Critical to Proper Operation | Water-Bath Spacer 82063 (incl. with 81140)

Water heats all sides of vessel with spacer



With Spacer

Spacer prevents water overflow into the food



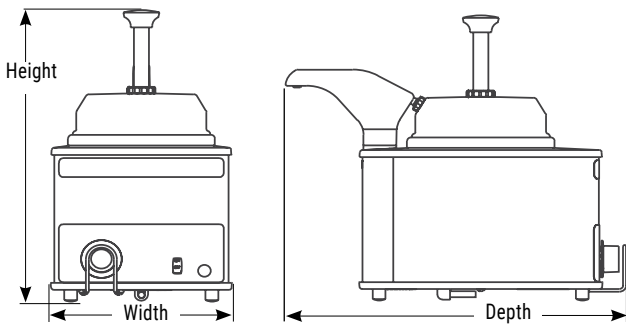
NO!

Without Spacer

3-in-1 merchandiser – the epitome of versatility.

MERCHANDISING TOPPING WARMERS: FSPW-SS

Server Supreme™ model FSPW-SS is a stainless steel, rethermalizing warmer with pump and heated spout warmer, plus (3) magnetic merchandising signs for Hot Fudge, Caramel and Cheese Sauce. An adjustable, temperature-sensing thermostat controls the 500 watt, wrap-around heating element, turning it off and on as needed. An ON/OFF rocker switch controls power. The water-bath model, 81140 serves from a #10 can or 2.8 L stainless steel jar (94009 jar sold separately) and dispenses in 30 mL max portions adjustable in 3.7 mL increments. 120V AC 4.3-A, 517 Watts. 2-year warranty.



MERCHANDISING TOPPING WARMERS

order amt	model/item	description	capacity	dims (H x W x D)	plug	electrical	watts	weight
<input type="checkbox"/>	FSPW-SS 80840	merchandising topping warmer with pump 81320	#10 can, 2.8 L	39.2 x 22.7 x 39.4 cm		230 V AC 4.3 A	517	6.8 kg
<input type="checkbox"/>	FSPW-SS 83697							

ACCESSORIES

order amt	item	description
<input type="checkbox"/>	94009	stainless steel 2.8 L jar
<input type="checkbox"/>	94008	abs plastic, jar storage lid
<input type="checkbox"/>	82063	water-bath spacer (for 81140)
<input type="checkbox"/>	81320	topping pump (for 81140)
<input type="checkbox"/>	86749	magnetic decal set

KEEP YOUR MENU FRESH & FUN WITH MERCHANDISING TOPPING WARMERS
SERVER-PRODUCTS.COM | 262.628.5600